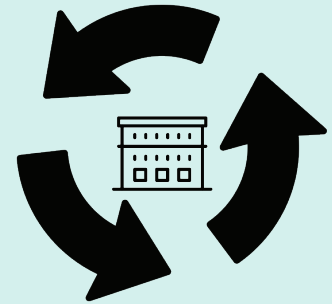


Every Year the
**ARCHITECTURE
DEPARTMENT**
Throws away

3

40 yard
Rolloff
Dumpsters
of trash

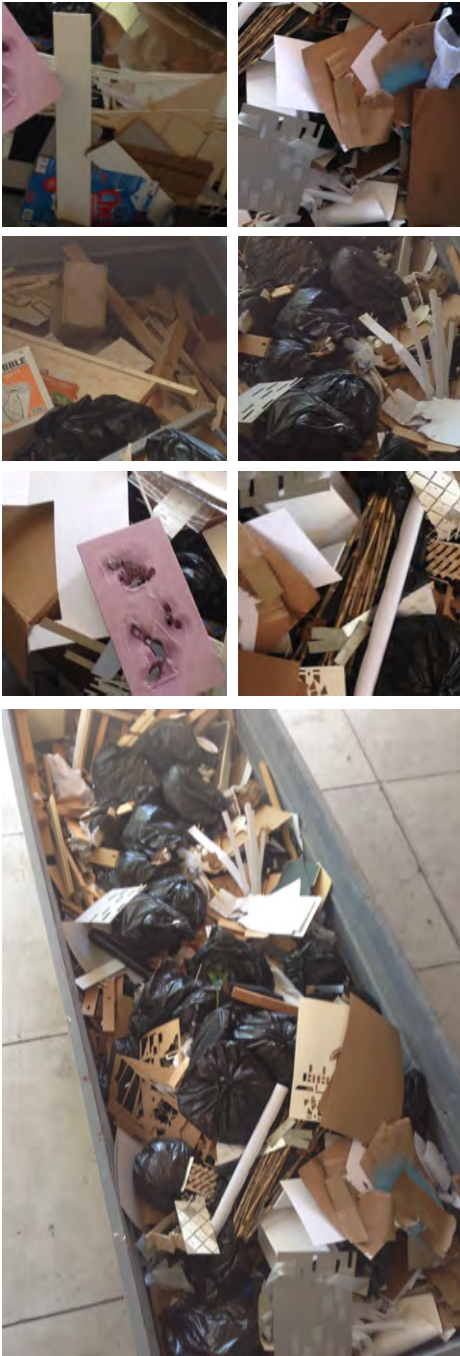


CAL POLY CAED WASTE STREAM

A proposal to reduce waste
generated from model-making

EDES 408 Spring 2016
Advisors: Ellen Burke, Chris Clark, and
Jonathan Reich

Project by:
Michelle Chen, Christian Frederiksen,
Alejandro Lopez, Michelle Marshall,
Alena Maudru



This is **SCRAPI**

Super

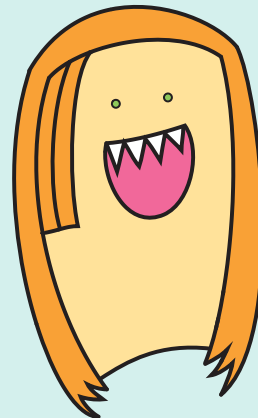
Cool

Reuseable

Architectural

Parts

Inventory



SCRAPI was designed to fit over the trash bins in studios, facilitating the storage of model material scraps. The current design have 3 vertical slots for various small, flat materials, an oversized slot, and a container for other materials, like glue, hardware, fishing line, & etc. We fabricated and install a prototype unit in Jen Shield's first year studio as an experiment, and there was an overwhelming amount of positive response.

More SCRAPIs are being built and installed in architecture studios in hopes of raising awareness about the environmental footprint of model-making.

